



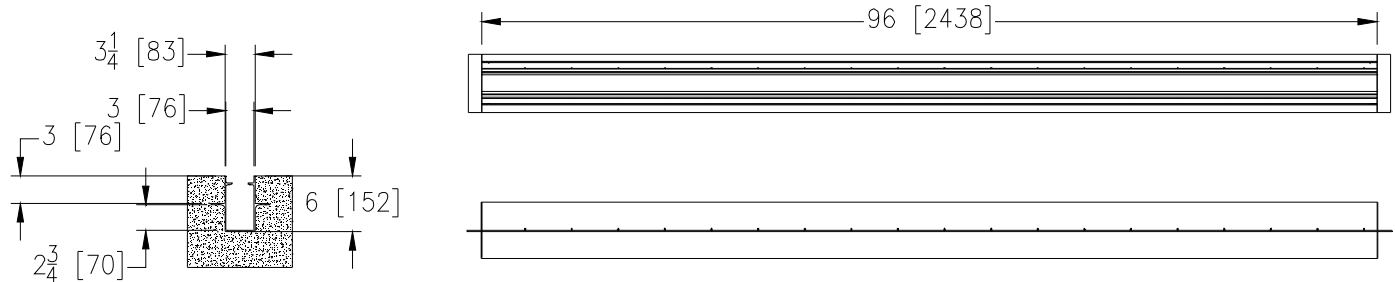
# ZA880-300B

## 3 [76] WIDE REVEAL TRENCH DRAIN SYSTEM

TAG \_\_\_\_\_

Dimensional Data (inches and [ mm ]) are Subject to Manufacturing Tolerances and Change Without Notice

SPECIFYING ENGINEER IS RESPONSIBLE FOR CONCRETE ENCASEMENT AND REINFORCING BASED UPON APPLICATION AND LOCAL CODES



### ENGINEERING SPECIFICATION: Zurn ZA880-300B

Channels are 96 [2438] long, 3-1/4 [82] wide reveal, 3 [76] throat, and have a 5-5/8 [149] invert. Modular channel sections are made of 0% water absorbent Aluminum Alloy T-6063T5. Channels have a positive mechanical connection between channel sections that will not separate during the installation. Channels weigh less than 2 lbs. [0.91kg] per linear foot, have a Manning's coefficient of .002 and neutral 0% built in slope. Channels have 1-1/2 [38] wide flange on both sides to mechanically lock into the concrete surround. Channels are provided with standard BZ Bronze Decorative grates that do not lock down not intended for dynamic traffic loadings. Zurn 3-1/4 [82] wide reveal Bronze Decorative Grate conforming to ASTM specification B584 Copper Alloy No. 844. Decorative Bronze grate is rated class A per the DIN EN1433 top load classifications. Supplied in 24 [610] with 3/4 [19] bearing depth. Grate has an open area of 7.59 sq. in per ft. [16,075 sq. mm per meter]. Trench is anodized after extrusion to match grate color. Trench and grate shall be produced in the U.S.A.

### PREFIX OPTIONS (Check/specify appropriate options)

Z Eight-foot, Extruded Aluminum \*

### SUFFIX OPTIONS (Check/specify appropriate options)

#### Outlet Adapters Add/Each

- E1 Closed End Cap
- U1.5 1-1/2 [38] No-Hub Bottom Outlet
- U2 2 [51] No-Hub Bottom Outlet

### Grate Options (Load Classifications are per DIN EN1433)

- AWG Aluminum Wire Grate - Class A
- AZ Aluminum Decorative Grate - Class A
- BZ Bronze Decorative Grate - Class A
- DOG Ductile Decorative Grate - Class A (Non Domestic)
- NBZ Nickel Bronze Decorative Grate - Class A



MADE IN THE USA

### Miscellaneous Options

- K 1/8 [3] Weep Hole Above Flange
- KC Clamp Collar and Pan (includes-K)

\*REGULARLY FURNISHED UNLESS OTHERWISE SPECIFIED

REV. B	DATE: 05/25/12	C.N. NO. 124421
DWG. NO. 303192	PRODUCT NO. ZA880-300B	